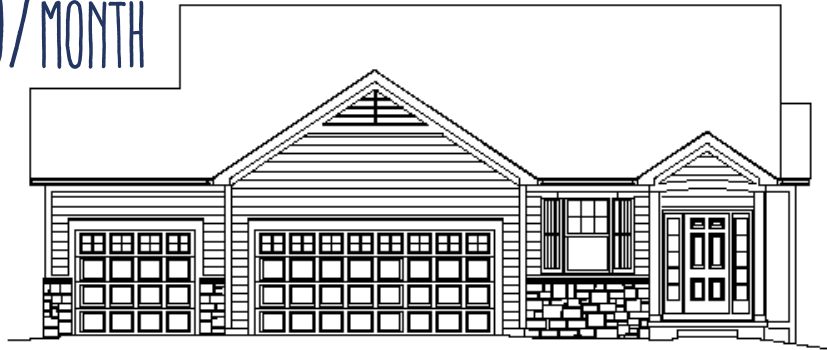


# The Mayfield with a 3 Car Garage

426 Stoneridge Drive Lawrence, KS

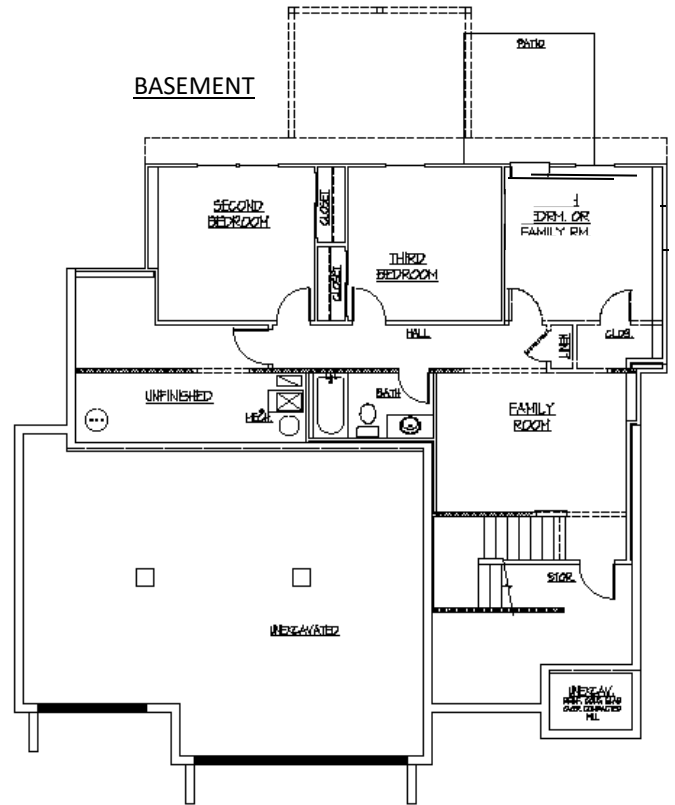
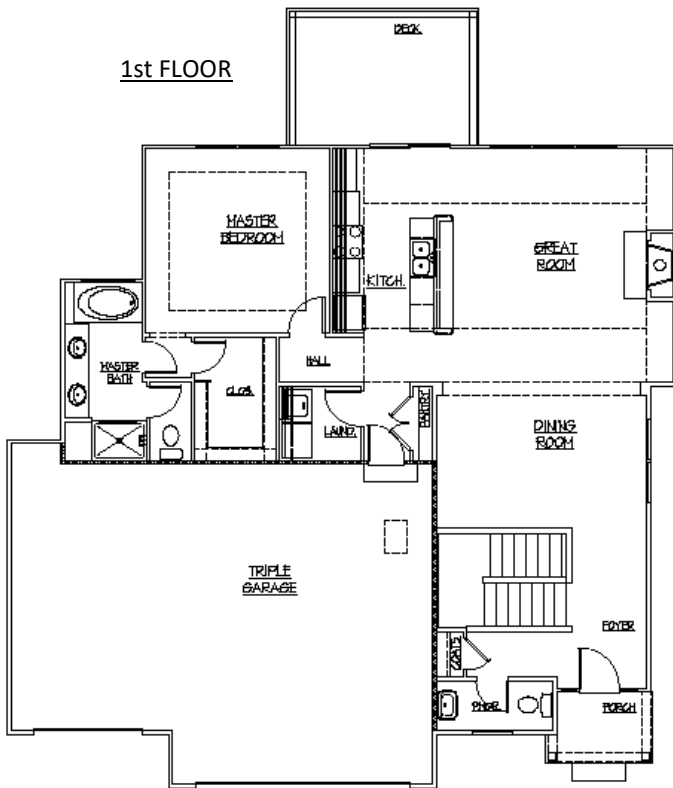
\$2,400.00/MONTH



2,167 sq ft / 4 bedroom / 2.5 bathrooms

1st FLOOR

BASEMENT



The Mayfield is a large **ranch style** home on a **finished basement** equipped with a main level Master bedroom and three additional bedrooms in the basement. There are **two living areas** including a cozy family room in the basement. The main level is finished with a beautiful **engineered hardwood** you are sure to get compliments on. You'll find gorgeous **granite** countertops throughout as well as lovely ceramic or porcelain **tile** in all of the bathrooms and laundry room (**washer and dryer** included). The large, fully equipped kitchen is complete with **stainless steel** appliances including a gas range, dishwasher, refrigerator and freezer with an ice maker and a microwave—look at all of that counter space! You'll love the large master bath—you have an option for a shower or a soak in the tub. The **powder room** is elegantly placed away from the main living areas for privacy and all on its own so you can always keep it guest-ready.

785.840.0775

[www.livewestend.com](http://www.livewestend.com)