

# The Patrick with a 3 Car Garage

422 Stoneridge Drive Lawrence, KS

\$2,400.00 per month

  
KELLYN  
ADDITION

  
Castle Rock V.C.



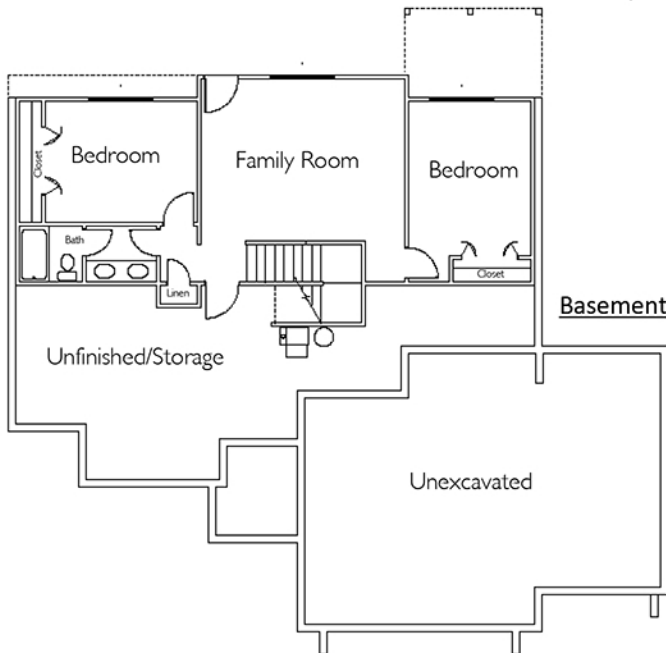
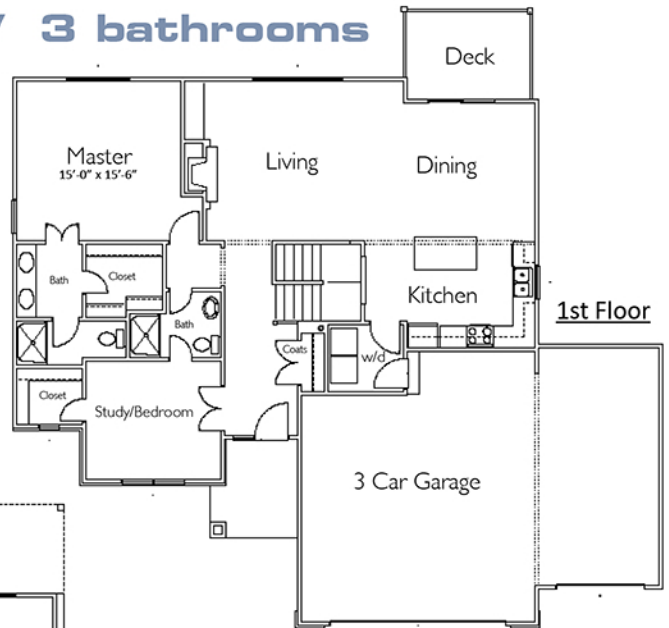
**2,265 sq ft / 4 bedroom / 3 bathrooms**

The Patrick is a Ranch style home on a **finished basement**. This home has a main level Master Bedroom with its own bathroom with dual sinks and a beautifully designed shower. The living, dining and kitchen have beautiful **engineered hardwood floors** that will accent any furnishings. The **gas fireplace** with a stone surround will be a cozy place to relax in the winter with a lovely mantle to decorate any way you please!

The gourmet kitchen has a **gas range**, the perfect island for food prep and entertaining and a window above the sink for natural light. Right around the corner is the **mud room** equipped with a washer & dryer right off of the **3 car garage**.

Also on the main level is the perfect room for a **home office** or even a nursery with access to the hall bath.

The finished basement has two more bedrooms, bathroom and a **family room**—a great space for movie watching or play room for the kids. There is also a large unfinished area for **storage**.



All appliances included: Gas Range, microwave, garbage disposal, dishwasher refrigerator and freezer, washer and dryer, and sprinkler system.

Other luxuries include:

- Faux wood blinds
- Granite countertops
- Stainless steel appliances
- Engineered hardwood floors
- Ceramic or Porcelain tile with high end accents.

785.840.0775

[www.livewestend.com](http://www.livewestend.com)