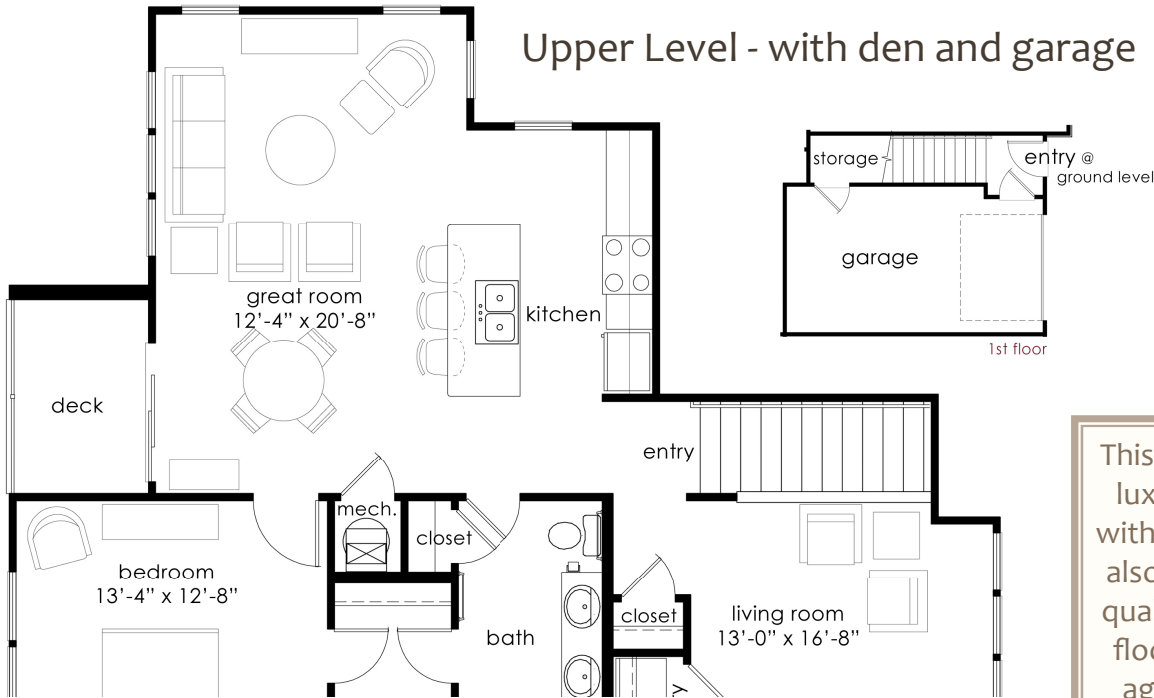


One Bedroom

The Foxtail

Upper Level - with den and garage

1,061 sq ft (approx)



This sizeable one-bedroom luxury apartment comes with an attached garage. It also has many other great qualities including an open floor plan, plenty of storage, a back porch and a conveniently placed laundry

The Foxtail Floor plan Amenities:

- Attached 1 - car garage
- Extra living space (den)
- Open living
- Laundry room close to bedroom for convenience
- Private porch
- Large Walk-in Closet
- Porcelain tile in Kitchen, bath and laundry
- Ceiling Fans in living room and bedroom
- Many windows for natural light

West Field Place Amenities:

- On-site Pool
- On-site Fitness Center
- Clubhouse
- All-Electric
- Washers & dryers in each unit

204 Eisenhower Drive
Lawrence, KS 66049



785.840.0775

